



Rabbit anti GluR1 (Phospho Serine 863) Polyclonal Antibody

Alternative Name(s): Glutamate receptor 1; GLUR1

Order Information

- **Description:** GluR1 (pS863)
- **Catalogue:** 631-020
- **Lot:** See label
- **Size:** 100ug/200ul
- **Host:** Rabbit
- **Clone:** nan
- **Application:** IHC(P), WB
- **Cross Reactivity:** Hu, Ms, Rt

ANTIGEN PREPARATION

A synthetic phosphospecific peptide STLPRN-S*-GAG

BACKGROUND

Glutamate receptors are the predominant excitatory neurotransmitter receptors in the mammalian brain and are activated in a variety of normal neurophysiologic processes. These receptors are heteromeric protein complexes with multiple subunits, each possessing transmembrane regions, and all arranged to form a ligand-gated ion channel. The classification of glutamate receptor is based on their activation by different pharmacologic agonists. This gene belongs to a family of alpha-amino-3-hydroxy-5-methyl-4-isoxazole propionate (AMPA) receptors. The level of phosphorylated GluR1 at two major sites implicated in GluR regulation for further research of the mechanisms underlying synaptic plasticity

PURIFICATION

The Rabbit IgG is purified by site-modified Epitope Affinity Purification.

FORMULATION

25mM Tris-Buffered Saline (pH7.2-7.8) with 0.01% NaN₃ + antibody stabilizer

SPECIFICITY

This antibody recognizes phosphorylated Serine 863 of human GluR1 protein (STLPRNSGAG). It does not recognize the non-phosphorylated GluR1 or other phosphorylation sites.

STORAGE

The antibodies are stable for 24 months from date of receipt when stored at -20oC to -70oC. The antibodies can be stored at 2oC-8oC for three month without detectable loss of activity. Avoid repeated freezing-thawing cycles.

APPLICATIONS/SUGGESTED WORKING DILUTIONS*

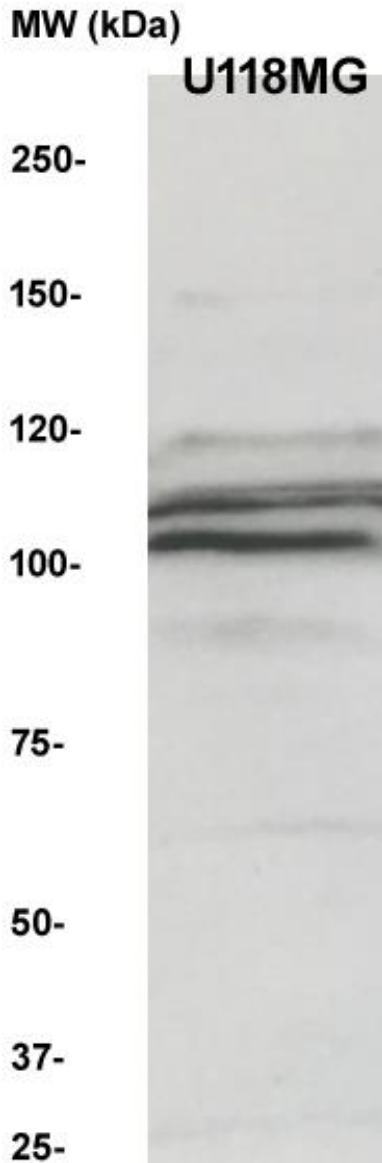
- Western Blot: 0.1-1 µg/ml
- ELISA: 0.01-0.1 µg/ml
- Immunoprecipitation: 2-5 µg/ml
- IHC: 2-10 µg/ml
- Flow cytometry: 5-10 µg/10⁶ cells
- MW (kDa): 100-110 kDa
- Positive Control: Kidney Tissue
- Cellular Location: Cell Membrane

*Optimal dilutions should be determined by researchers for the specific applications.

FOR RESEARCH USE ONLY.

AbboMax, Inc 2528 Qume Drive, Suite 8, San Jose, California 95131, USA
1 408-573-1898 (Tel). 1 408-573-1858 (Fax). www.abbomax.com info@abbomax.com

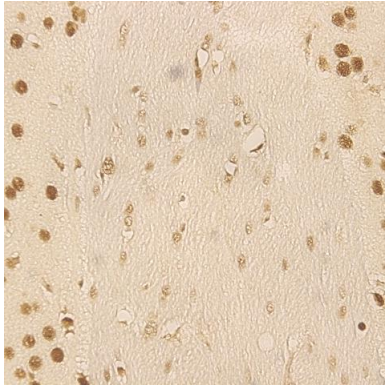
DATA ATTACHMENTS



Western Blot: The cell lysate derived from brain cell line (U118MG) was resolved onto 12% SDS-PAGE and immunoblotted by Rabbit anti GluR1 (pS863) (Cat# 631-020) at 1:500. An immunoreactive protein was observed around 100-110 kDa.

Immunohistochemistry: Rat brain (FFPE) stained with Rabbit anti GluR1 (pS849) (Cat# 631-010) at 1:200 for 10 min @ RT. Staining of formalin-fixed tissue requires boiling tissue sections in 10 mM Citrate Buffer, pH 6.0 for 10 min followed by cooling at RT for 20 min.

FOR RESEARCH USE ONLY.



REFERENCES

FOR RESEARCH USE ONLY.

AbboMax, Inc 2528 Qume Drive, Suite 8, San Jose, California 95131, USA
1 408-573-1898 (Tel). 1 408-573-1858 (Fax). www.abbomax.com info@abbomax.com